

Farmer's Share of Retail Food Dollar

Did you know that farmers and ranchers receive only 20 cents of every food dollar that consumers spend on food at home and away from home?

According to USDA, off farm costs including marketing, processing, wholesaling, distribution and retailing account for 80 cents of every food dollar spent in the United States.

Bacon
1 Pound



Retail: \$4.99
Farmer: \$0.63

Top Sirloin Steak
1 Pound



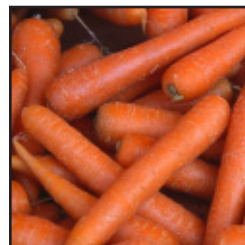
Retail: \$8.49
Farmer: \$1.06

Bread
1 Pound



Retail: \$3.49
Farmer: \$0.18

Fresh Carrots
3 Pounds



Retail: \$2.63
Farmer: \$1.15

Beer
6-Pack Cans



Retail: \$6.29
Farmer: \$0.10

Cereal
18 Ounce Box



Retail: \$3.99
Farmer: \$0.08

Cheddar Cheese
1 Pound



Retail: \$4.69
Farmer: \$1.12*

Eggs
1 Dozen



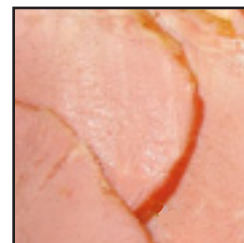
Retail: \$2.59
Farmer: \$0.90

Flour
5 Pounds



Retail: \$2.59
Farmer: \$0.89

Boneless Ham
Price per Pound



Retail: \$3.99
Farmer: \$0.63

Lettuce
1 Head (2 Pounds)



Retail: \$2.79
Farmer: \$0.90

Milk
1 Gallon, Fat Free



Retail: \$4.39
Farmer: \$1.50

Potato Chips
Lays Classic, 11oz



Retail: \$3.99
Farmer: \$0.18*

Fresh Potatoes
Russet, 10 Pounds



Retail: \$4.99
Farmer: \$0.47*

Soda
Two Liter Bottle



Retail: \$1.09
Farmer: \$0.09

Farmer's share derived from USDA, NASS "Agricultural Prices," 2011.

Retail based on Safeway (SE) brand except where noted.

*Reflects January 2011 prices.



Feb. 28, 2011